



WELCOME!



Class of 2028

La Jolla High Counseling Team



- A-Fe: Katherine Fitzpatrick
- Fi-L: Alex Drozda
- M-Sc: Rhiannon Soria
- Se-Z: Clinton McVay
- Counseling Secretary: Megan Cox



LJHS Graduation Requirements



- **Social Science:** 3 years (World Hist, US History, Gov/Econ)
- **English:** 4 years
- **Math:** 3 years
- **Science:** 3 years (Biology, Chemistry and Physics)
- **World Language :** 2 years (or just completion of 3-4+)
- **Visual and Performing Art:** 1 year of same course
- **Physical Education:** 2 years and Fitnessgram
- **GPA = 2.0 or higher**
- **44 Total Academic Credits Required**

English



4 years of English

Grade

All Advanced classes have prerequisites.

9

English 1,2-Identity & Relationships 1-2
Regular or Seminar

10

English 3-4

11

American Literature

12

AP English Literature/ ERWC

Math Sequences



3 years required/all years recommended

Current Class 8th	9 th	10 th	11 th	12 th
CC Math 8 <small>(Adv. requires A/B in Math 8 and passing the math assessment test)</small>	→ Integrated I	Integrated II	Integrated III	Precalculus Statistics
	↘ Advanced Integrated I	Advanced Integrated II	Advanced Integrated III	Honors Precalculus AP Statistics
Advanced Integrated I	Advanced Integrated II <small>(Passing score on Math 1 assessment.)</small>	Advanced Integrated III	Hnrs Precal → Precalculus ↔ Statistics ↔	AP Calculus AB or Mesa Math 150 AP Calculus AP Statistics

Placement based on previous course and grades.

Science

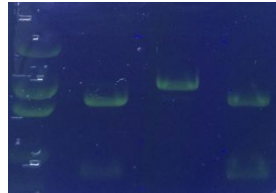
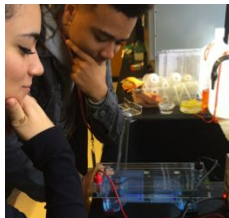


3 years: Biology, Chemistry and Physics
Bio Med Pathway – Needs Biology and Chemistry **and Physics**
(application required- in google course request form)

Grade	All Advanced have prerequisites.	Biomedical Pathway (Top-down sequence)
9 th	Biology or Physics (Adv. or Regular)	Hnrs. Principles of Biomedical Sciences -9 th <u>plus</u> <u>Biology (concurrently)</u>
10	Biology, Chemistry, or Physics (Adv./Honors/AP)	Hnrs. Human Body Systems-10 th <u>plus</u> <u>Chemistry or Physics (concurrently)</u>
11		*Hnrs. Medical Interventions-11 th <u>plus</u> <u>Chemistry or Physics (concurrently)</u>
12 th (If taking four years)	Marine Science	Hnrs. Biomedical Innovation-12 th (“g” elective) <i>(Possible internship/2 hour Block)</i> *May earn college credit by exam

Biomedical Science Pathway

•Project Lead The Way (PLTW) offers the only nationally recognized biomedical sciences curriculum. The PLTW biomedical sciences curriculum consists of four courses taken sequentially: Principles of the Biomedical Sciences (PBS), Human Body Systems (HBS), Medical Interventions (MI), Biomedical Innovations (BI).



- During the **Principles of Biomedical Sciences (PBS)** course, students will explore concepts of biology and medicine to determine factors that led to the death of Anna Garcia. Students will examine autopsy reports, investigate medical history, explore medical treatments, basic biology, and learn research processes.
- During the **Human Body Systems (HBS)** course, students will examine the interactions of human body systems as they explore: identity, power, movement, protection, and homeostasis of the human body.
- During the **Medical Interventions (MI)** course, students biotechnology concepts and skills as they investigate how to prevent, diagnose, and treat disease within the Smith family. Explorations include: immunology, surgery, genetics, pharmacology, medical devices, and diagnostics.
- During **Biomedical Innovations (BI)** course students address topics ranging from public health and biomedical engineering to clinical medicine and physiology. They have the opportunity to work on an independent design project with a mentor or advisor from a university, medical facility, or research institution.

World Language



**2 years of the same language or
level 3-4 or higher completed**

Grade		4 th year and higher
7 th -12 th	Spanish 1-2, 3-4, 5-6	Hnrs. Spanish 7-8 AP Spanish Language AP Spanish Literature
7 th -12 th	Latin 1-2, 3-4, 5-6	AP Latin

**Please note: Students can also meet this requirement by the LOTE exam,
However... The LOTE exam only meets graduation requirement, not
college admission requirements.**

Social Studies



3 years of Social Studies

Grade

All Advanced classes have prerequisites.

9

No history class

10

World History/Adv. World History,
or AP European History

11

US History

12

Government and Economics
or
Political Science - Mesa College

Physical Education/Athletics

2 years of PE
required in 9th/10th grade

Grade	Level
9 th	PE 1-2 /PE Dance
10 th	PE 3-4/PE Dance

**Students may be placed in 6th period
PE Athletics if on a CIF/LJHS team.
Based on roster list per Athletic
Director**



Photo by Pearl Preis

Please Note...



- PE Marching Band = PE credit only, offered 1 semester per year



CIF/LJHS Athletic Sports



Fall:

Cross Country
Football
Girls Golf
Girls Volleyball
Field Hockey
Boys Water Polo
Girls Tennis
Cheer

Winter:

Girls Basketball
Boys Basketball
Girls Soccer
Boys Soccer
Wrestling
Girls Water Polo

Spring:

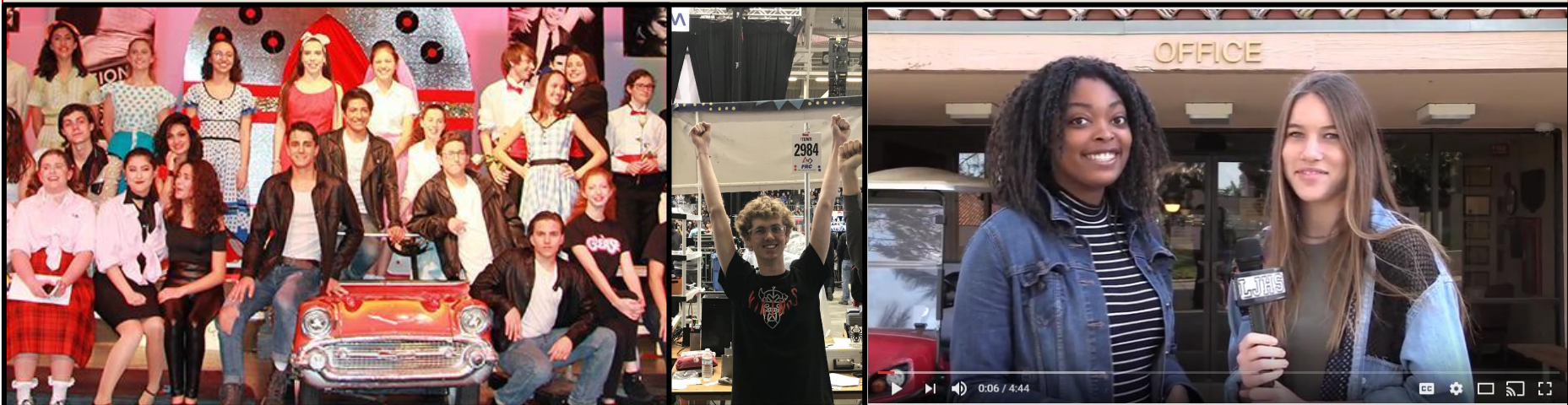
Badminton
Baseball
Softball
Track & Field
Boys Lacrosse
Girls Lacrosse
Swim & Dive
Boys Volleyball
Boys Golf
Boys Tennis



Electives available to Freshmen



- Visual/Performing Art (VAPA):
Art, Band, Technical Theater, Theater & Elements of Green Construction Design (Woodshop)
- Computer Science: Computer Science Discoveries
- Other: Journalism, AVID, Yearbook, ASB (Student Government),



Career Technical Education (CTE)



For students with specific interests, pathways are available, but completion is not required and courses can be taken at any grade level.

<u>Software and Systems Development</u>	<u>Cabinetry, Millwork, and Woodworking</u>	<u>Production and Managerial Arts</u>	<u>Production and Managerial Arts</u>
Computer Sci Discoveries 1-2 AP Computer Science Principles AP Computer Science A	Elements Green Const Design UCCI Multicraft Core Curriculum: Building Scaled Structures 1,2 (HP	Tech Theatre 1-2 Tech Theatre 3-4 Honors Tech Theater 5-6	Multimedia Production 1-2 Multimedia Production 3-4

Sample 4 Year Schedule



	Grade 9	Grade 10	Grade 11	Grade 12
1	English	English	English	English
2	Math	Math	Math	(Math)
3	Elective	World History	US History	Gov't/Econ
4	World Lang.	World Lang.	(World Lang.)	Fine Art
5	PE	PE	Elective	Elective
6	Science	Science	Science	Elective

Sample 4 Year Schedule for Biomedical Pathway



	Grade 9	Grade 10	Grade 11	Grade 12
1	English	English	English	English
2	Math	Math	Math	(Math)
3	Biology	World History	Chemistry	Gov't/Econ
4	World Lang.	World Lang.	(World Lang.)	Visual/Perf Art
5	PE	PE	US History	Biomedical Innovation (Internship block)
6	Principals of Biomedical	Human Body Systems	Medical Interventions	

What to Consider in Selecting Courses...



Should I take advanced classes?

- Consider: Prerequisites, test scores, overall schedule rigor, and your involvement in extracurriculars (how much time will this be).

Teacher recommendations may be considered.

Balance is Key! Please consider all your activities and the demands of each course.

- Homework = about 30 minutes per regular class/longer for advanced classes. High school courses do require more work.

Remediation: Students must retake a class if they earned an “F” or “D” as a semester grade.

GPA



- Grade Point Average:
- Based on final grades each semester
- AP/Honors/College = weighted scale
A=5 B=4 C=3 (No weight for D's)
- Athletic Eligibility every 6 weeks
2.0+ Citizenship and Academic

A = 4, B = 3, C = 2, D = 1, F = 0

Grade Points = Grade Value x Units Earned

G.P.A. = $\frac{\text{Total Grade Points}}{\text{Total Units Earned}}$



Extracurricular Activities

GET INVOLVED!

- On campus - clubs, athletics, theatre, activities, ASB/yearbook/journalism
- Community service, internships, programs
- Summer Opportunities – community service and other programs, language immersion, etc.

Colleges want to see students involved all 4 years of high school.

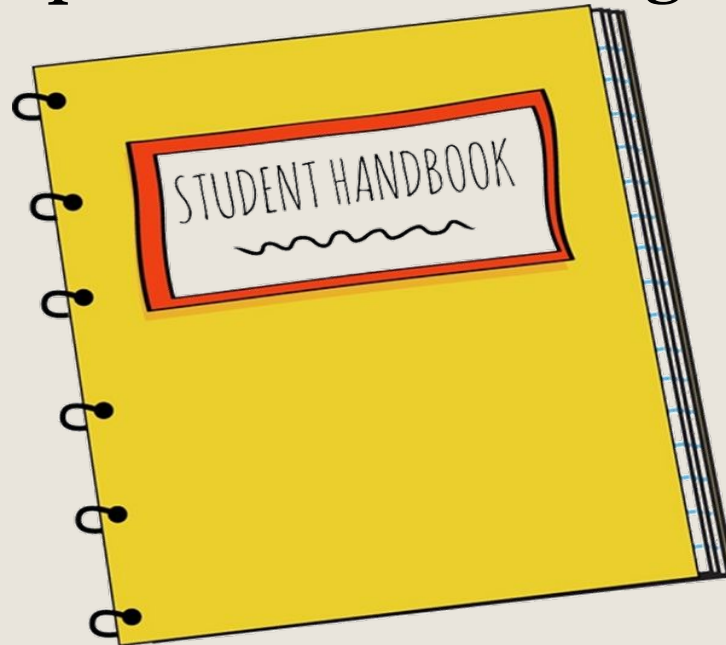
“Depth; not breadth”



Student Academic Handbook



- https://lajollahigh.sandiegounified.org/counseling/academic_handbook
- Course descriptions and prerequisites
- Graduation requirements & college planning



How to Select Your Classes!



- **Class of 2028 Course Cards**
 - Please review your paper copy to view course offerings.
check academic handbook for prerequisites for courses.
- **Deadline to submit:**
 - **January during in class 1 on 1 meetings**
- **Parents must help you complete and sign the form.**

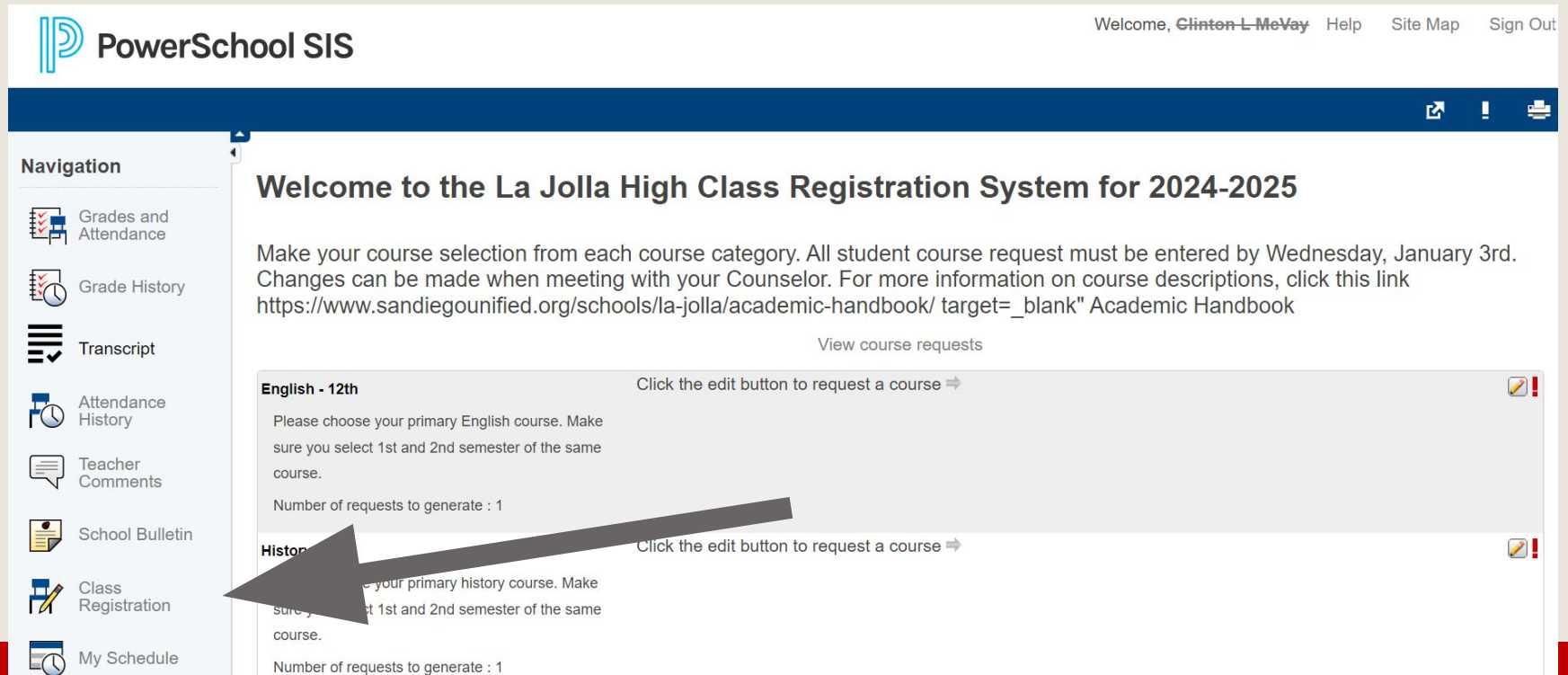
Reminders:



- **Course descriptions are in the Academic Handbook!**
- **Make sure you select 6 classes!**
 - **TIP: Write down the classes as you go thru the form!**
- **You must choose backup elective classes.**
- **Changes may be made during your meeting with your counselor!**

Powerschool Input

After Filling out course card log on to Powerschool and add courses under class registration



The screenshot displays the PowerSchool SIS web application. At the top, the header includes the PowerSchool SIS logo, a user welcome message for Clinton L. McVay, and links for Help, Site Map, and Sign Out. A navigation sidebar on the left lists various system functions: Grades and Attendance, Grade History, Transcript, Attendance History, Teacher Comments, School Bulletin, Class Registration (highlighted with a large grey arrow), and My Schedule. The main content area is titled "Welcome to the La Jolla High Class Registration System for 2024-2025". It contains instructions for course selection, a deadline of Wednesday, January 3rd, and a link to the Academic Handbook. Below the instructions, there are two course selection cards. The first card is for "English - 12th" and the second is for "History". Both cards include a "Click the edit button to request a course" link and a "Number of requests to generate : 1" field. A large grey arrow points from the "Class Registration" option in the sidebar to the "History" course card.

PowerSchool SIS

Welcome, Clinton L. McVay Help Site Map Sign Out

Navigation

- Grades and Attendance
- Grade History
- Transcript
- Attendance History
- Teacher Comments
- School Bulletin
- Class Registration
- My Schedule

Welcome to the La Jolla High Class Registration System for 2024-2025

Make your course selection from each course category. All student course request must be entered by Wednesday, January 3rd. Changes can be made when meeting with your Counselor. For more information on course descriptions, click this link <https://www.sandiegounified.org/schools/la-jolla/academic-handbook/> target=_blank" Academic Handbook

[View course requests](#)

English - 12th Click the edit button to request a course ➡

Please choose your primary English course. Make sure you select 1st and 2nd semester of the same course.

Number of requests to generate : 1

History Click the edit button to request a course ➡

Please choose your primary history course. Make sure you select 1st and 2nd semester of the same course.

Number of requests to generate : 1

Powerschool Input continued



Select 1st and 2nd Semester course by clicking on pencil in right hand corner then checking the 2 courses you would like.

View course requests

English - 12th Click the edit button to request a course ➡

English - 12th

Please choose your primary English course. Make sure you select 1st and 2nd semester of the same course.

✓	Course Name	Number	Course Description	Credits	Prerequisite Note	Alerts
<input type="checkbox"/>	ENGLITCP1AP(HP)	1653		1		
<input type="checkbox"/>	ENGLITCP2AP(HP)	1654		1		
<input type="checkbox"/>	(P)	1698		1		
<input type="checkbox"/>	ERWC 2 (P)	1699		1		
<input type="checkbox"/>	MESA-ENGL 101	1707		2		
<input type="checkbox"/>	MESA-ENGL 205	4760		2		

<< first < prev 1 next > last >>

! You may select 2 courses. You have selected 0 course(s).

Cancel Okay

course. Please make sure this selection is different from your 1st History Selection.

Number of requests to generate : 1



Questions?